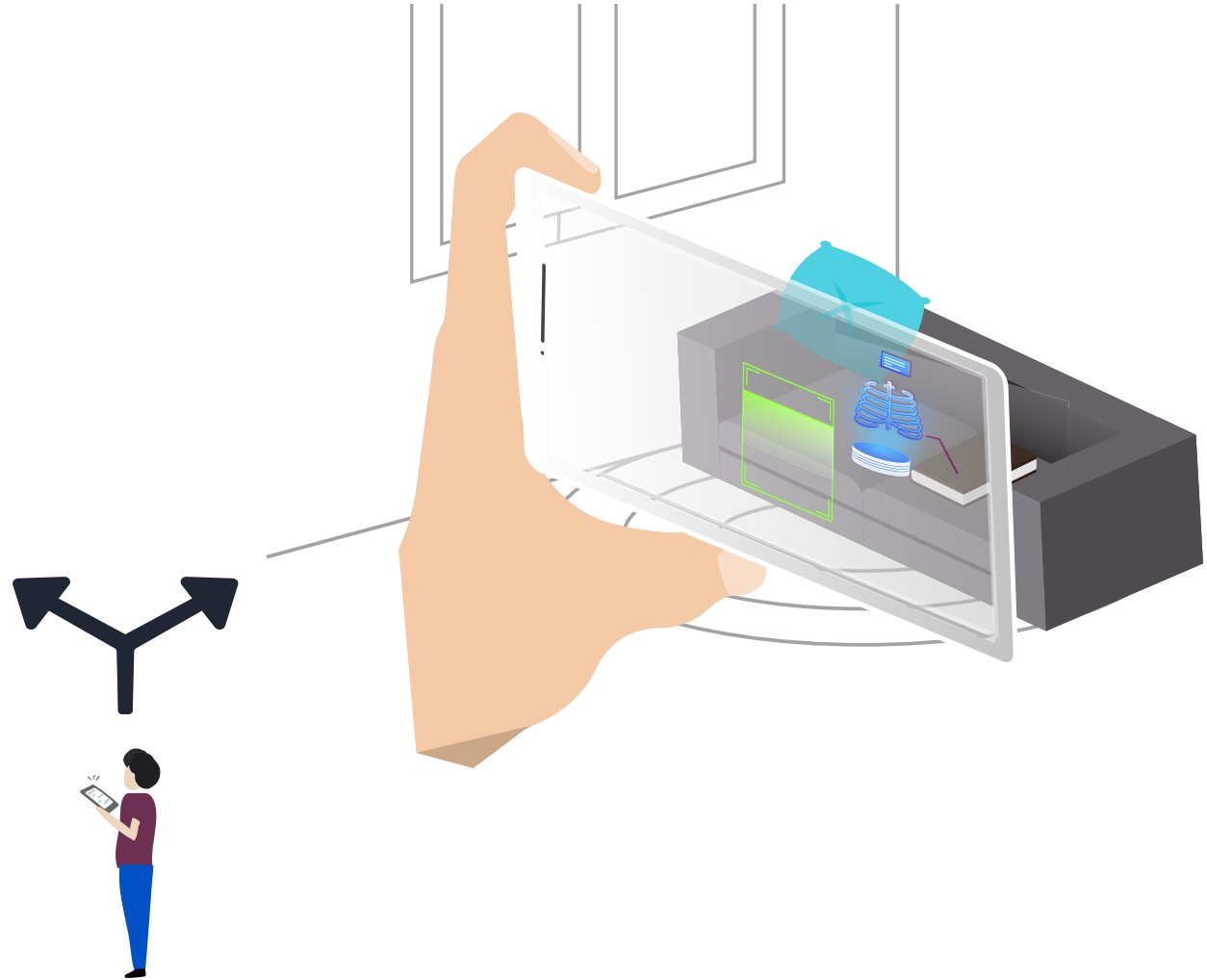
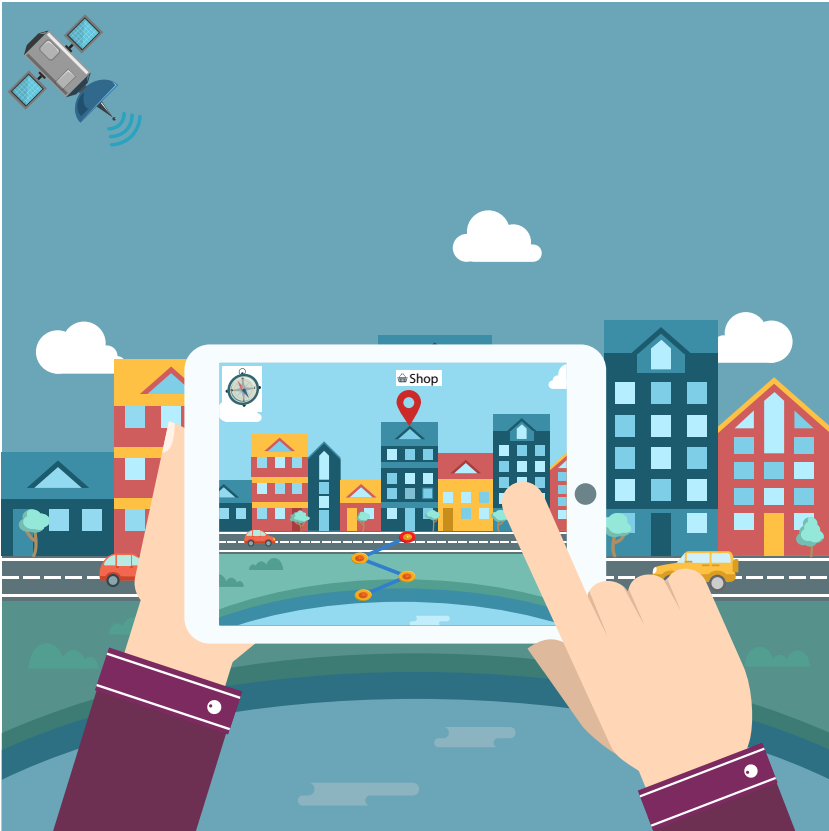


# Augmented Reality



To experience AR, you may need a device with a camera, GPS, and accelerometers. The AR anchors can be set either by geolocation in the case of map navigation, transportation, and other outdoor applications or by detecting objects' shapes via image recognition and/or using accelerometers. The user can get virtual information over real object and also drop indicators, virtual objects on the different detected / set AR anchors.